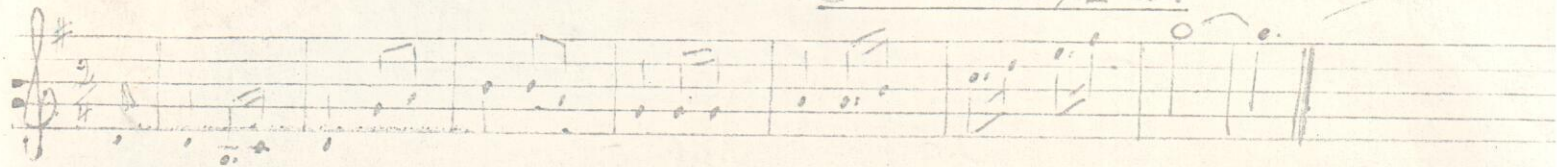
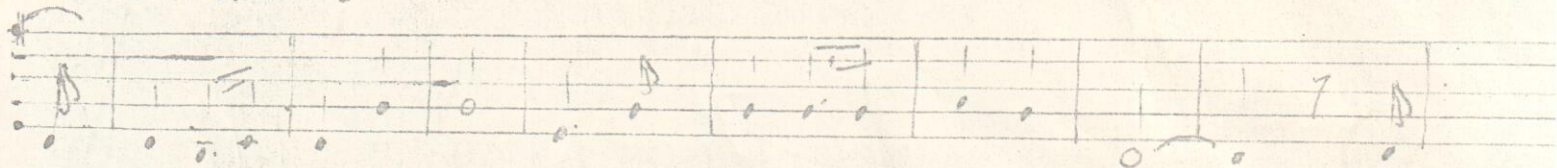


Hino do Centenário de Luis Alves

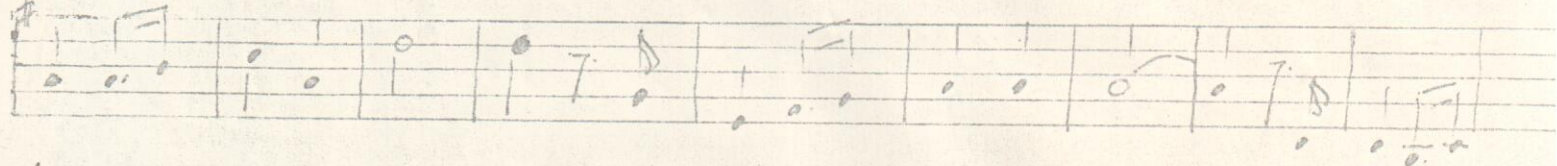
Tocha e música de L. Alves



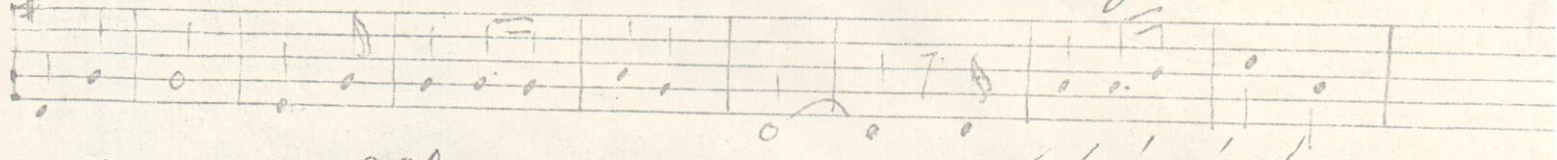
*Lento e marcato*



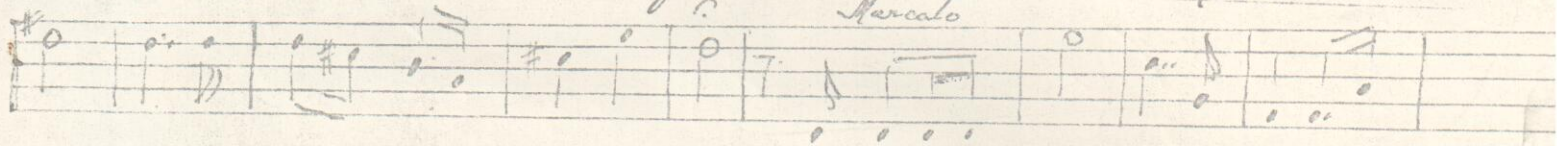
Luis Alves pinção di-to - so Plasmado na fé e no amor M.



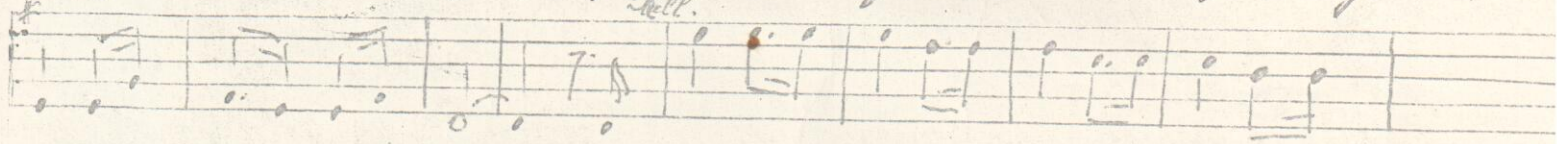
teia pra voz com go-go No seu cente-ná-rio em flor! Nasceu de dois



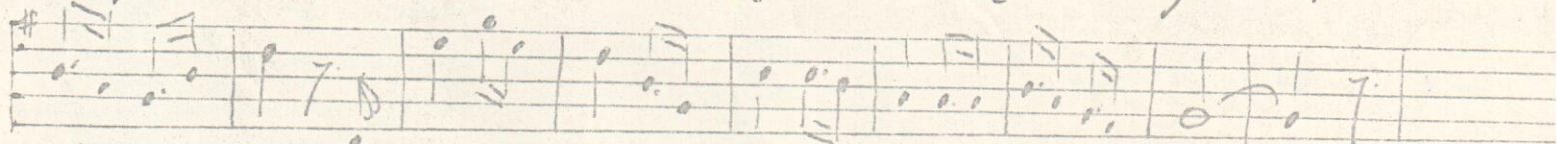
rios à margem Em "braços" a confluir Dos montes no vale à



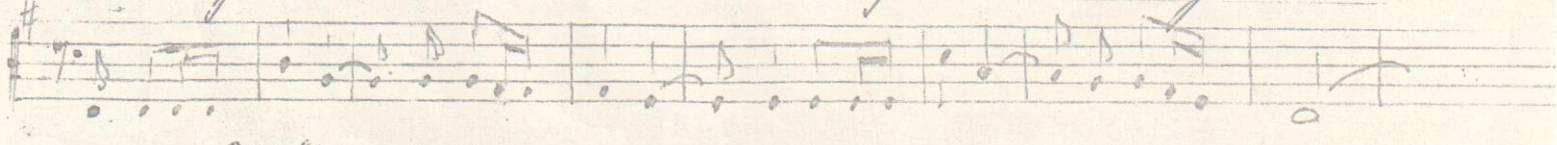
margem Sonhamo do foliz porvir! Queos filhos au-sen-tes se guem aos pre-



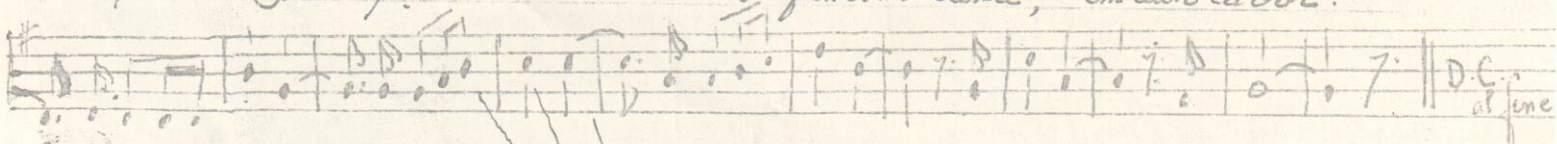
sentes pra um hi- no cantar Lembrando os anos de anseios e planos de



nos-so lugar Lembrando os anos de anseios e planos de no-so lugar!



Oh! polve Luis Alves que todos irmana No fumo ou cana, em duro labor!



em viva Luis Alves nos patos cantantes Nas preces cantantes De padres no altar!